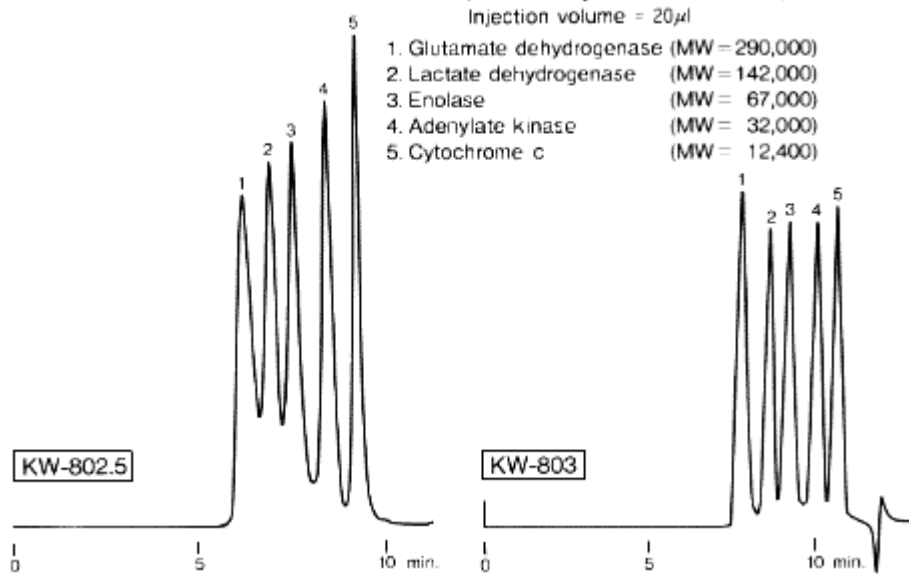


Sample: Molecular Weight Marker
(Produced by Oriental Yeast Ltd.)
Injection volume = 20 μ l

1. Glutamate dehydrogenase (MW = 290,000)
2. Lactate dehydrogenase (MW = 142,000)
3. Enolase (MW = 67,000)
4. Adenylate kinase (MW = 32,000)
5. Cytochrome c (MW = 12,400)



Columns : Shodex PROTEIN KW-802.5, KW-803 (8.0mmID*300mm each)
Eluent : 50mM Phosphate buffer(pH7.0) + 0.3M NaCl
Flow rate : 1.0mL/min
Detector : UV(280nm)
Column temp. : Room temp.